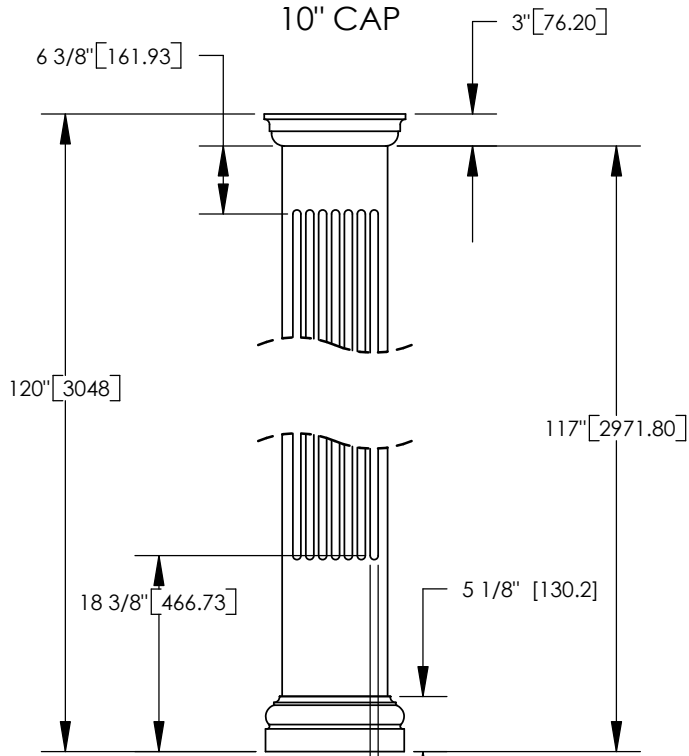
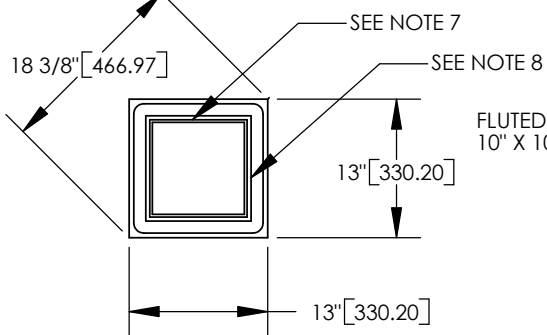


SQUARE TUSCAN
10" CAP



SQUARE TUSCAN
10" BASE

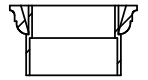


FLUTED SQUARE POST
10" X 10'

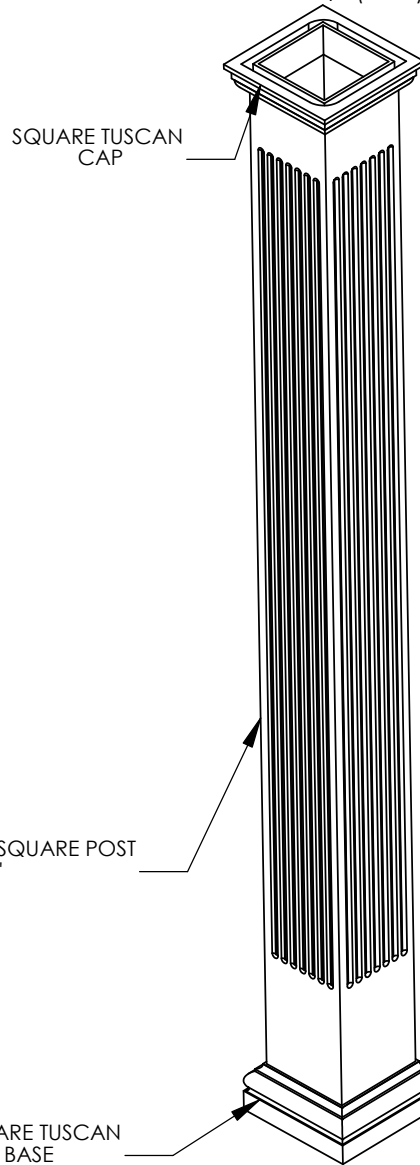
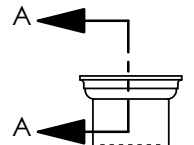
SQUARE TUSCAN
BASE

NOTES:

1. DIMENSIONS WITHIN THE PARENTHESES ARE METRIC UNITS (millimeters) or (Kg=Kilograms)
2. MATERIAL: FIBERGLASS REINFORCED POLYMER (FRP)
3. WEIGHT. COLUMN:
CAP:
BASE:
4. MATERIAL THICKNESS.
COLUMN: 3/8" (9.5)
5. INSIDE DIMENSION AT TOP OF COLUMN: 8 5/8" (219.1)
6. OUTSIDE DIMENSION AT TOP OF COLUMN: 9 3/8" (238.1)
7. INSIDE DIMENSION AT BOTTOM OF COLUMN: 9 1/8" (231.8)
8. OUTSIDE DIMENSION AT BOTTOM OF COLUMN: 9 7/8" (250.8)



SECTION A-A
SCALE 1 : 20



ARCHITECTURAL
VIEW
SCALE 1/25

		DIMENSIONS ARE IN INCHES (mm) TOLERANCES: FRACTIONAL: ± 1/8" ANGULAR: MACH ± BEND ± TWO PLACE DECIMAL ± THREE PLACE DECIMAL ±			
			MATERIAL		
			FINISH		
			DO NOT SCALE DRAWING		
NEXT ASSY	USED ON				
APPLICATION					

	NAME	DATE
DRAWN	SOF	05/05/08
CHECKED	RK	
ENG APPR.	RK	
MFG APPR.	RK	
Q.A.	RK	
COMMENTS:		

© COPYRIGHT Column & Post, Inc. 2002		
10"X 10' SQUARE FLUTED POST ASSEMBLY		
SIZE A	DWG. NO.	REV. 02
SCALE: 1/18	WEIGHT:	SHEET 1 OF 1

Column & Post, Inc.™
8013 Purfoy Road
Fuquay-Varina, NC 27526
Tel: (919) 255-1533
Fax: (919) 255-1553
E-Mail: www.columnpost.com